

# JET COOLER (COLD AIR GENERATOR)

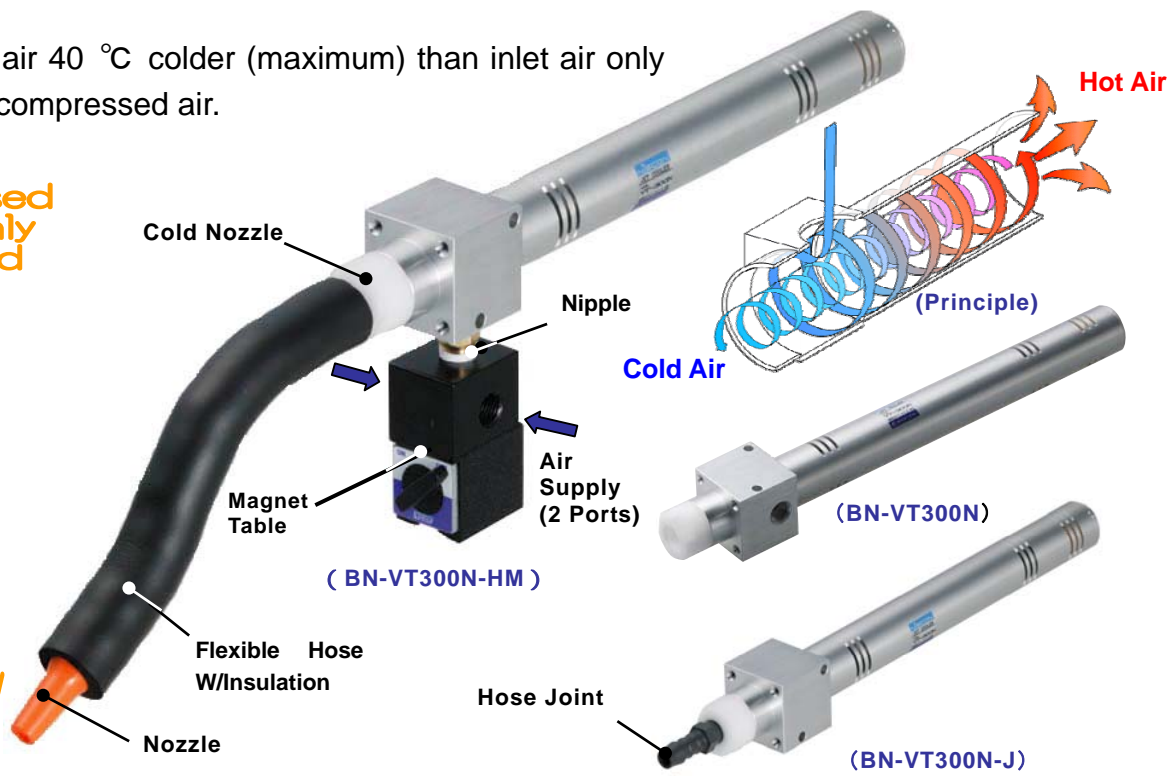
Jets out cold air 40 °C colder (maximum) than inlet air only by supplying compressed air.

Compressed Air Is Only Required

No Electricity

Long Life

User-Friendly



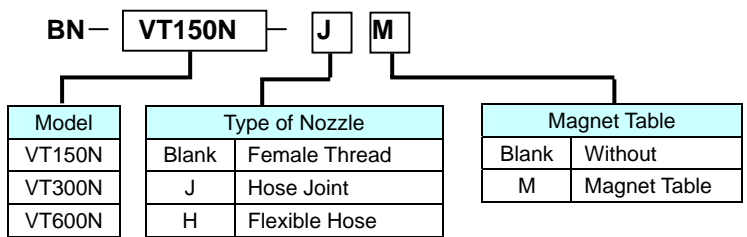
## Features/Principle

Jet cooler is a cold air generator, applying a principle of swirling theory, which does not have any moving parts. Without need of refrigerant or electricity, the jet cooler whirls compressed air inside the tube at high speed and then separates it into hot air and cold air. The generated cold air is readily used for spot cooling in many fields.

## Applications

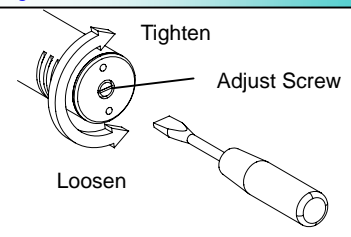
- Cooling Soldering
- Cooling Plastic Processing
- Cooling Electrical Cabinet
- Cooling CCTV Cameras
- Cooling Sewing Needles
- Cooling Spot Welding
- Fortifying Electric Wire
- Cooling Molded Parts

## Order Example



\* Flexible hose is composed of a nozzle, hose, connector and insulation.  
 \* Magnet Table comes with a nipple for connecting jet cooler and blind plug.

## Adjustment of Cold Air



Adjust the cold air temperature with the adjust screw at the end. Loosen it to lower the temperature and to decrease the generated air amount. Tighten it to raise the temperature and to increase the generated air amount.

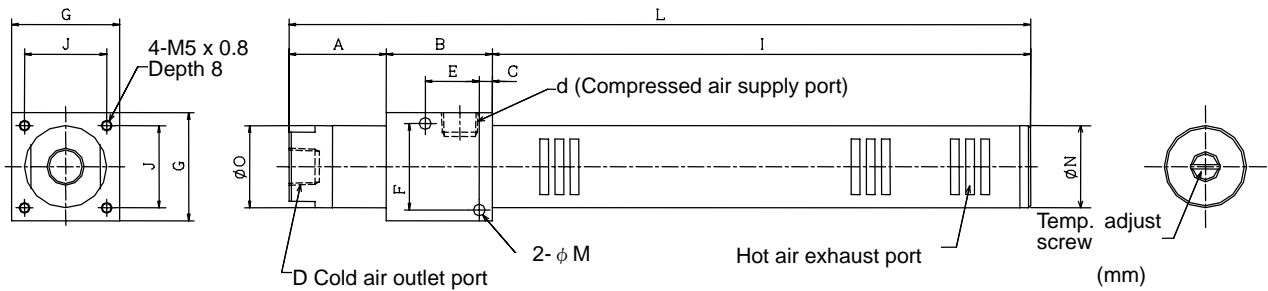
## Specifications

Jet Cooler Body					Flexible Hose			Magnet Table		
Model	Air Consumption L/min(ANR)	Working Pres(MPa)	Proof Press (MPa)	Weight (kg)	Conne ction	Nozzle Dia.	Approx. Lenght (mm)	Conne ction	Dimensions W × D × H(mm)	Weight (kg)
BN-VT150N	160	0.2~0.5	1.0	0.25	R1/8	φ6	200	Rc1/4	30 × 39 × 63	0.3
BN-VT300N	375	0.2~0.5	1.0	0.45	R1/4	φ6	200	Rc1/4	30 × 39 × 63	0.3
BN-VT600N	600	0.2~0.5	1.0	0.85	R3/8	φ9	300	Rc3/8	55 × 60 × 97	1.4

\* Air consumption is supply air pressure at 0.4MPa. \* Length of the flexible hose includes the cold nozzle.

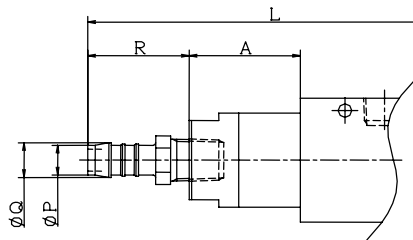
## Dimensions

### ● BN-VT150N BN-VT300N BN-VT600N



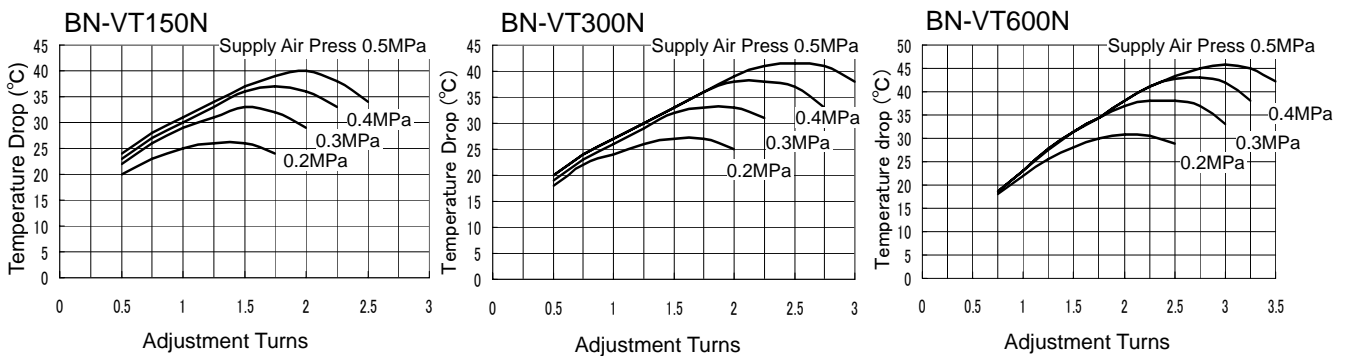
Symbol Model	A	B	C	d	D	E	F	G	I	J	L	M	N	O
BN-VT150N	26	31	5	Rc1/8	Rc1/8	12	26	35	171	25	228	4.5	25	22
BN-VT300N	31	38	5	Rc1/4	Rc1/4	18	33	40	246	30	315	5.5	30	28
BN-VT600N	45	49	6	Rc3/8	Rc3/8	25	40	50	249	38	343	5.5	38	38

### ● Hose Joint



Symbol Model	A	L	P (Hose Inner Dia.)	Q	R
BN-VT150N-J	26	262	8	10	34
BN-VT300N-J	31	353	10	12	38
BN-VT600N-J	45	384	12	14	41

## Temperature Characteristics



\* Temperature Drop: Temperature drop against inlet air. \* Adjustment Turns: Number of rotating the adjust screw.



- Please make sure that air filters and regulators are equipped with the air line system.
- For use in cold temperature, use an air dryer to prevent freezing.
- For correct handling, read the instruction manual before installing.

**NIHON SEIKI CO., LTD.**

- Head Office/Plant 2-8 Yogikita, Yao City, Osaka 581-0016 Japan  
TEL. 81-72-923-0481 FAX. 81-72-994-3603
- Osaka Office 2-8 Yogikita, Yao City, Osaka 581-0016 Japan  
TEL. 81-72-923-0481 FAX. 81-72-994-3603
- Tokyo Office 1-16-23 Nakamagome, Ota-ku, Tokyo 140-0027 Japan  
TEL. 81-3-3777-6111 FAX. 81-3-3777-6116
- Nagoya Office 3-2-16 Yoshino, Higashi-ku, Nagoya-City, Aichi 485-0039 Japan  
TEL. 81-52-937-2180 FAX. 81-52-937-2181  
URL: <http://www.nihonseiki.com>

● Agency