

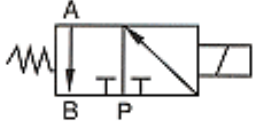
## Suitable for Water, Hot water, Air, Naphtha

### Features:

- In order to prolong operating life, it is better to allocate pipe horizontally and to face coil upward.
- Voltage drop range is within  $\pm 10\%$ .
- Pressure of voltage DC is 70% of voltage AC only.
- Stainless steel series is custom-made.



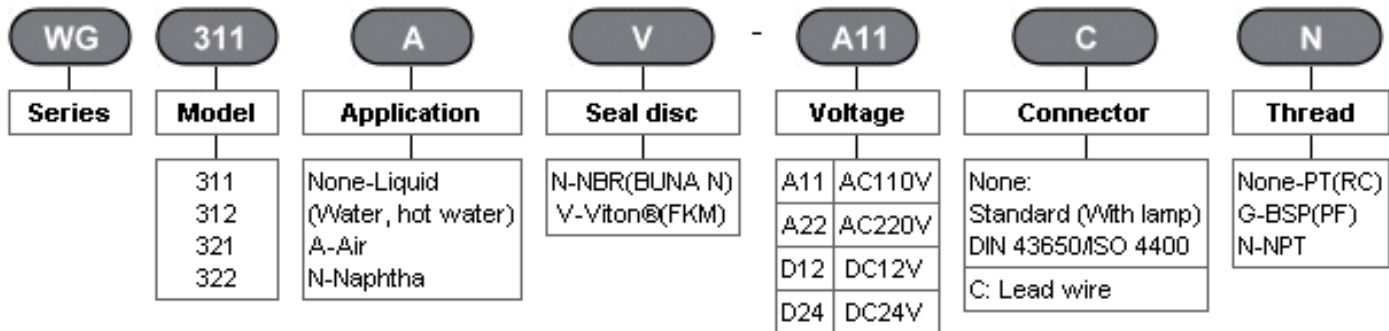
Normally closed



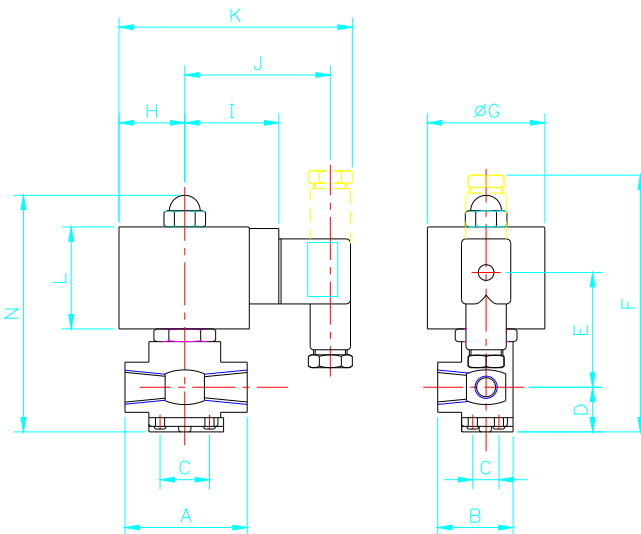
### Specifications:

Model	Port size	Orifice (mm)	CV valve	Fluid temp. (°C)	Seal disc	Differential pressure kg/cm <sup>2</sup> (bar)			Weight (kg)
						Water	Air	Naphtha (120°C)	
WG 311	1/4"	1.6	0.09	-10   80	NBR Viton®	0-7	0-7	0-7	0.46
WG 312	1/4"	2.2	0.16			0-5	0-5	0-5	0.46
WG 321	1/4"	1.6	0.09			0-11	0-11	0-11	0.67
WG 322	1/4"	2.2	0.16			0-7	0-7	0-7	0.67

### How to Order:



### External Dimensions:



### Inapplicable Fluids:

1. Fluids that have kinematic viscosity over 50 CST.
2. Fluids that will turn to liquid after being heated and become solid after being cooled.
3. Corrosive fluids.

Unit: mm

Model	A	B	C	D	E	F	øG	H	I	J	K	L	M	N
WG 311	43	33	15	19	40	94	44	22	34	54	86	35	1/4"	92
WG 321	43	33	15	19	39	91	56	28	41	60	99	38	1/4"	96
WG 312	43	33	15	19	46	96	35	20	33	54	86	33	1/4"	92
WG 322	43	33	15	19	48	98	40	23	35	56	89	38	1/4"	95