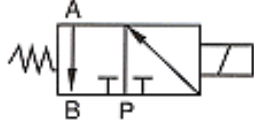


Features:

- Voltage drop range is within $\pm 10\%$.
- Installation position: free.
- Cylinder range: $\varnothing 20 \sim \varnothing 80 \text{mm}$.
- Response: 15~20ms.
- Standard coil is DIN 43650B with LED connector.
- No manual override.
- Viton® seal is custom-made



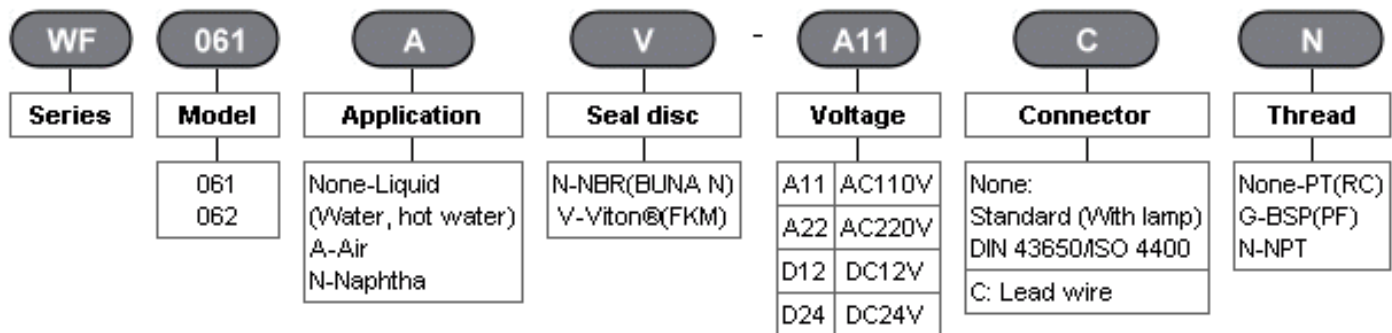
Normally closed



Specifications:

Model	Port size	Orifice (mm)	CV valve	Fluid temp. (°C)	Seal disc	Differential pressure kg/cm^2 (bar)			Weight (kg)
						Water	Air	Naphtha (120°C)	
WF 061	1/8"	1.1	0.06	-10 80	NBR Viton®	0-10	0-10	0-10	0.20
WF 062	1/8"	1.5	0.08			0-7	0-7	0-7	0.20

How to Order:



External Dimensions:

