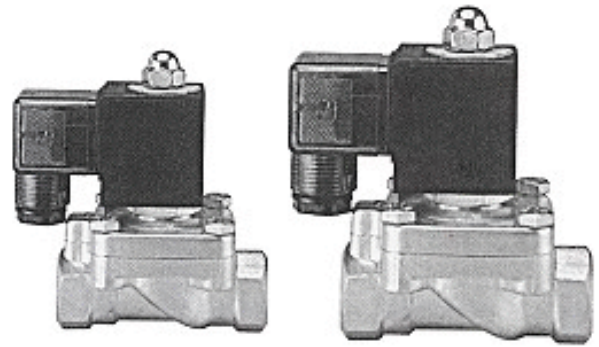


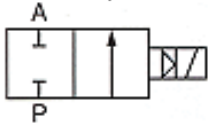
Suitable for Water, Hot water, Air, Steam, Oil

Features:

- In order to prolong operating life, it is better to allocate pipe horizontally and coil to face upward.
- Voltage drop range is within $\pm 10\%$.
- Pressure of voltage DC is 70% of voltage AC only.
- Combined diaphragm design assures no breaking.
- Max. temperature is up to 120°C .



Normally closed



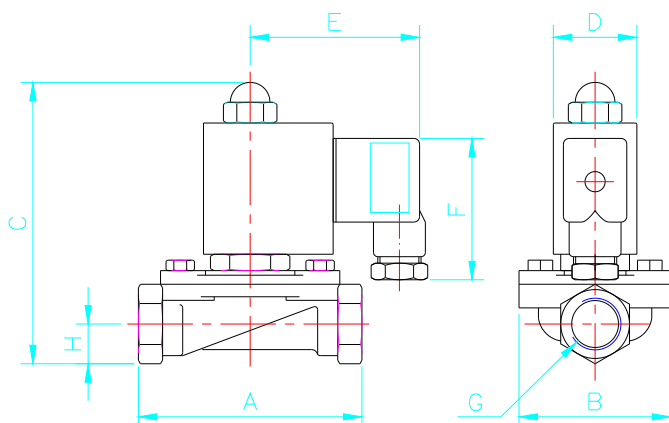
Specifications:

Model	Port size	Orifice (mm)	CV valve	Fluid temp. ($^{\circ}\text{C}$)	Seal disc	Differential pressure kg/cm^2 (bar)			Weight (kg)
						Water	Air	Naphtha (120°C)	
WD 140	3/8"	15	4.5	-10	NBR Silicone EPDM Viton®	0.5-10	0.5-10	0.5-10	0.32
WD 150	1/2"	15	4.5	 80		0.5-10	0.5-10	0.5-10	0.32
WD 200	3/4"	20	9.3	(120)		0.5-10	0.5-10	0.5-10	0.6

How to Order:

WD	140	A	V	A11	C	G
Series	Model	Application	Seal disc	Voltage	Connector	Thread
WD Bronze WDS Stainless steel 316	140 150 200	None-Liquid (Water, hot water) A-Air N-Naphtha	N-NBR(BUNA N) S-Silicone E-EPDM V-Viton®(FKM)	A11 AC110V A22 AC220V D12 DC12V D24 DC24V	None: Standard (With lamp) DIN 43650/ISO 4400 C: Lead wire	None-PT(RC) G-BSP(PF) N-NPT

External Dimensions:



Unit: mm

Model	A	B	C	D	E	F	G	H
WD 140	75	52	101	30	53	48	3/8"	14.5
WD 150	75	52	101				1/2"	14.5
WD 200	85	60	110				3/4"	18

WD/WDS

Inapplicable Fluids:

1. Fluids that have kinematic viscosity over 50 CST.
2. Fluids that will turn to liquid after being heated and become solid after being cooled.
3. Corrosive fluids.