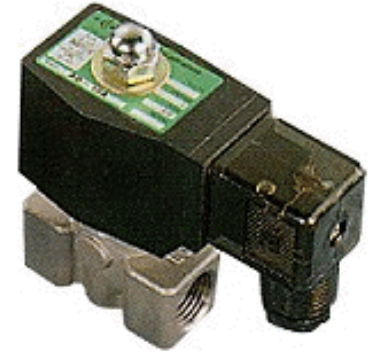


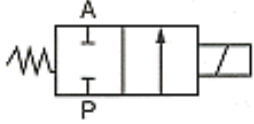
# Suitable for Water, Hot water, Air, Gas, Slight acid & alkali, Vacuum

## Features:

- Being systematically manufactured this unit features compactness, large flow, and low power consumption.
- Waterproof coil is suitable for high-humidity areas.
- Combined diaphragm design assures no breaking.



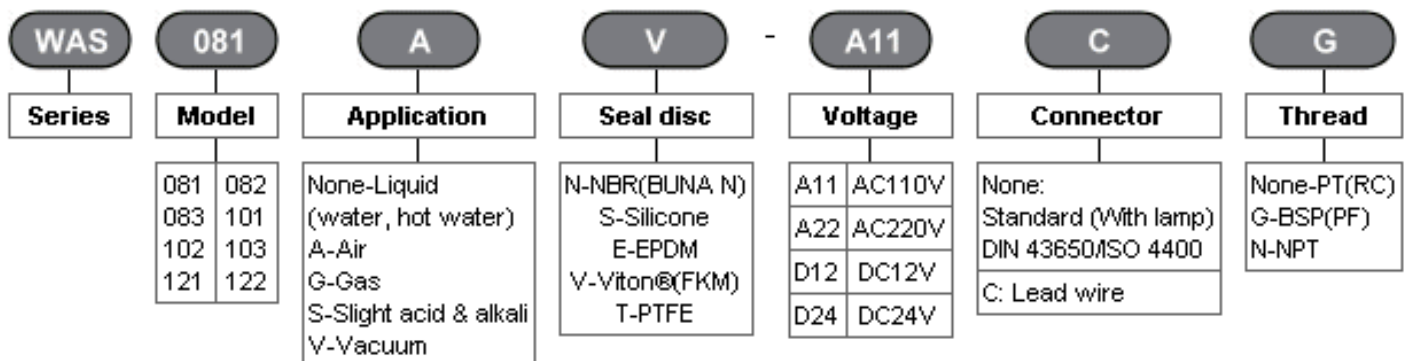
Normally closed



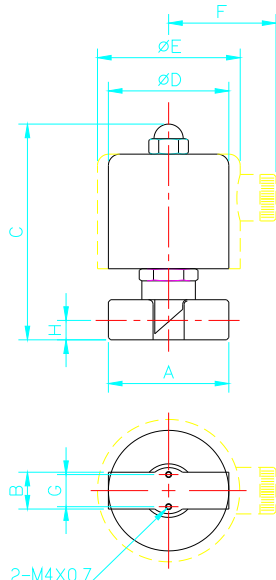
## Specifications:

Model	Port size	Orifice (mm)	CV valve	Fluid temp. (°C)	Seal disc	Differential pressure kg/cm <sup>2</sup> (bar)					Weight (kg)
						Water	Air	Gas	Naphtha(120°C)	Vacuum	
WAS 081	1/4"	3	0.26	-10   80 (120)	NBR Silicone EPDM Viton®	0-10	0-10	0-10	0-10	0-10 <sup>-6</sup> torr	0.47
WAS 082	1/4"	4	0.58			0-7	0-7	0-7	0-7	0-10 <sup>-6</sup> torr	0.47
WAS 083	1/4"	5	0.64			0-5	0-5	0-5	0-5	0-10 <sup>-6</sup> torr	0.47
WAS 101	3/8"	4	0.58			0-10	0-10	0-10	0-10	0-10 <sup>-6</sup> torr	0.73
WAS 102	3/8"	6	0.79			0-5	0-5	0-5	0-5	0-10 <sup>-6</sup> torr	0.73
WAS 103	3/8"	8	0.97			0-2	0-2	0-2	0-2	0-10 <sup>-6</sup> torr	0.73
WAS 121	1/2"	6	0.79			0-5	0-5	0-5	0-5	0-10 <sup>-6</sup> torr	0.78
WAS 122	1.2"	8	0.97			0-2	0-2	0-2	0-2	0-10 <sup>-6</sup> torr	0.78

## How to Order:



## External Dimensions:



Unit: mm

Model	A	B	C	D	E	F	G	H	Voltage type
WAS 081	41	19	85	53	-	63	15	10.5	AC
WAS 083	41	19	86	56	-	64	15	10.5	DC
WAS 101	50	25	90	-	58	65	15	11.7	AC
WAS 103	50	25	90	-	68	70	15	11.7	DC
WAS 121	55	27	91	-	58	65	-	13	AC
WAS 122	55	27	91	-	68	70	-	13	DC

## Notes:

1. Direct-acting valves are ideally suited to allocate at any angle.
2. Voltage drop range is within ±10%.
3. Pressure of voltage DC is 70% of voltage AC only.
4. Max. temperature is up to 120°C.
5. Silver shading ring is custom-made.

## Inapplicable Fluids:

1. Fluids that have kinematic viscosity over 50 CST.
2. Fluids that will turn to liquid after being heated and become solid after being cooled.
3. Strong corrosive fluids.