

Suitable for Water, Hot water, Air, Gas, Naphtha, Vacuum

Features:

- Being systematically manufactured this unit features compactness, large flow, and low power consumption.
- Waterproof coil is suitable for high-humidity areas.
- Combined diaphragm design assures no breaking.



Normally closed



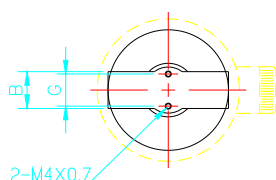
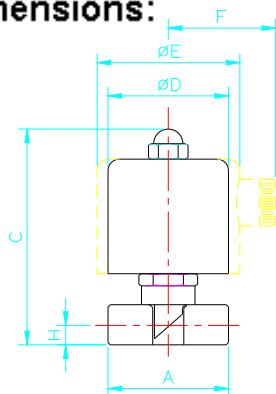
Specifications:

| Model | Port size | Orifice (mm) | CV valve | Fluid temp. (°C) | Seal disc | Differential pressure kg/cm ² (bar) | | | | | Weight (kg) |
|--------|-----------|--------------|----------|-------------------------|---|--|------|------|----------------|-------------------------|-------------|
| | | | | | | Water | Air | Gas | Naphtha(120°C) | Vacuum | |
| WA 061 | 1/8" | 3 | 0.26 | -10 80 (120) | NBR Silicone EPDM PTFE Viton® | 0-10 | 0-10 | 0-10 | 0-7 | 0-10 ⁻⁶ torr | 0.49 |
| WA 062 | 1/8" | 4 | 0.58 | | | 0-7 | 0-7 | 0-7 | 0-5 | 0-10 ⁻⁶ torr | 0.49 |
| WA 063 | 1/8" | 5 | 0.64 | | | 0-5 | 0-5 | 0-5 | 0-3 | 0-10 ⁻⁶ torr | 0.49 |
| WA 081 | 1/4" | 3 | 0.26 | | | 0-10 | 0-10 | 0-10 | 0-7 | 0-10 ⁻⁶ torr | 0.47 |
| WA 082 | 1/4" | 4 | 0.58 | | | 0-7 | 0-7 | 0-7 | 0-5 | 0-10 ⁻⁶ torr | 0.47 |
| WA 083 | 1/4" | 5 | 0.64 | | | 0-5 | 0-5 | 0-5 | 0-3 | 0-10 ⁻⁶ torr | 0.47 |
| WA 101 | 3/8" | 4 | 0.58 | | | 0-10 | 0-10 | 0-10 | 0-7 | 0-10 ⁻⁶ torr | 0.73 |
| WA 102 | 3/8" | 6 | 0.79 | | | 0-5 | 0-5 | 0-5 | 0-3 | 0-10 ⁻⁶ torr | 0.73 |
| WA 103 | 3/8" | 8 | 0.97 | | | 0-2 | 0-2 | 0-2 | 0-1 | 0-10 ⁻⁶ torr | 0.73 |
| WA 121 | 1/2" | 6 | 0.79 | | | 0-2 | 0-5 | 0-2 | 0-3 | 0-10 ⁻⁶ torr | 0.78 |
| WA 122 | 1/2" | 8 | 0.97 | | | 0-2 | 0-2 | 0-2 | 0-1 | 0-10 ⁻⁶ torr | 0.78 |

How to Order:

| WA | 061 | V | V | A11 | C | N |
|--------|--|--|--|--|---|-----------------------------------|
| Series | Model | Application | Seat disc | Voltage | Connector | Thread |
| | 061 062 063 081 082 083 | None-Liquid (water, hot water) A-Air G-Gas N-Naphtha V-Vacuum | N-NBR(BUNA N) S-Silicone E-EPDM V-Viton®(FKM) T-PTFE | A11 AC110V A22 AC220V D12 DC12V D24 DC24V | None: Standard (With lamp) DIN 43650/ISO 4400 C: Lead wire | None-PT(RC) G-BSP(PF) N-NPT |

External Dimensions:



| Model | A | B | C | D | E | F | G | H | Voltage type |
|-----------------------|----|----|----|----|----|----|----|------|--------------|
| WA 061 WA 083 | 41 | 19 | 85 | 53 | - | 63 | 15 | 10.5 | AC |
| WA 101 WA 103 | 50 | 25 | 90 | - | 58 | 65 | 15 | 11.7 | AC |
| WA 121 WA 122 | 55 | 27 | 91 | - | 58 | 65 | - | 13 | AC |
| | | | | | | | | | DC |

Notes:

1. Direct-acting valves are ideally suited to allocate at any angle.
2. Voltage drop range is within ±10%.
3. Pressure of voltage DC is 70% of voltage AC only.
4. Max. temperature is up to 120°C.
5. PTFE seal is custom-made.

Inapplicable Fluids:

1. Fluids that have kinematic viscosity over 50 CST.
2. Fluids that will turn to liquid after being heated and become solid after being cooled.
3. Corrosive fluids.