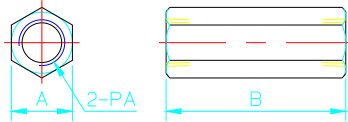


• VC Check valve:

Symbol:

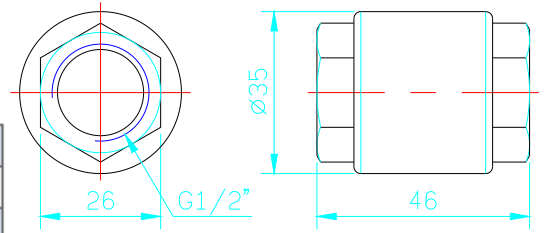


• VC01,02,03



Item	Flow(Nl/min)	A	B	PA
VC01	470	14	40	G1/8"
VC02	1100	17	50	G1/4"
VC03	1900	21	50	G3/8"

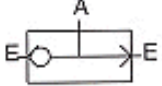
• VC04 (G1/2")



Flow: 3000 NI/min

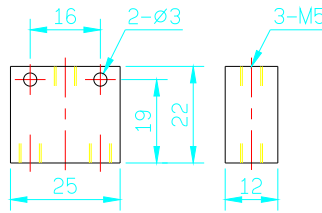
• VR Shuttle Valve:

Symbol:



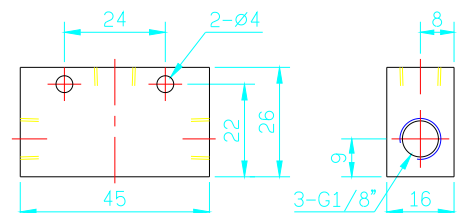
OR.

• VR00 (M5)



Flow: 110 NI/min

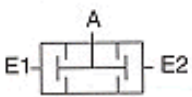
• VR01 (G1/8")



Flow: 650 NI/min

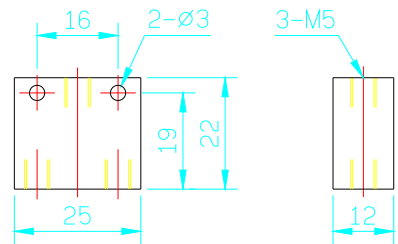
• VS Dual-Pressure Valve:

Symbol:



AND.

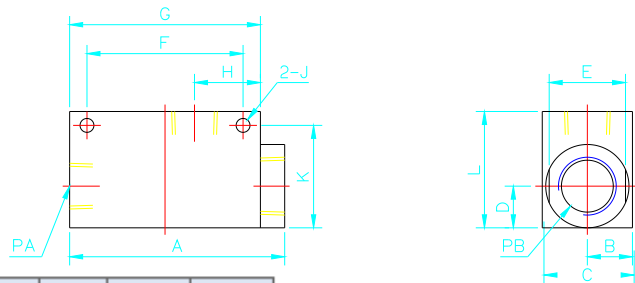
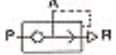
• VS00 (M5)



Flow: 110 NI/min

• VQ Quick exhaust valve:

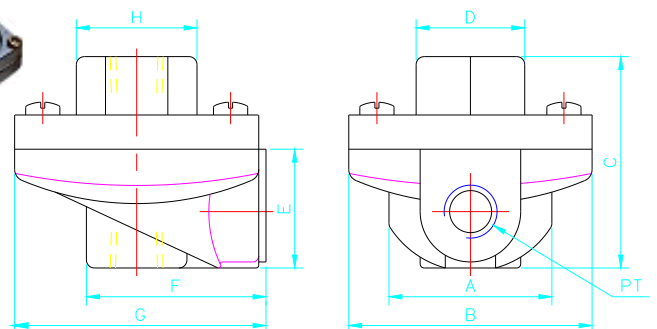
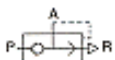
Symbol:



Item	Flow (NI/min)	A	B	C	D	E	F	G	H	J	K	L	PA	PB
VQ01	600	40	8	16	9	14	26	35	12	3.4	22.6	26	G1/8"	G1/8"
VQ02	1450	62	13	26	12	22	45	55	19	4	29.5	33.5	G1/4"	G3/8"
VQ03	1450	62	13	26	12	22	45	55	19	4	29.5	33.5	G3/8"	G3/8"
VQ04	3000	69	20	40	20	36	51	62	20	4	46	50	G1/2"	G1/2"

• QEV Quick exhaust valve:

Symbol:



Item	Flow (NI/min)	A	B	C	D	E	F	G	H	PT
QEV-4302	4427	41	61	53	27	29	44	60	30	1/4"
QEV-4303	6796	41	61	53	27	29	44	60	30	3/8"
QEV-4304	12712	59	100	75	35	40	63	101	38	1/2"
QEV-4306	15572	59	100	75	35	40	63	101	38	3/4"