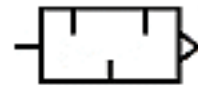


## Features:

- Significant silence effect.
- Auto-exhaust causes small resistance and none faulty effects for machinery movement.
- Miniature design for easy and fast mounting.
- The material of the silencer's filter is anticorrosive with perfect water and oil proof.

Symbols



## Specifications:

Item/Model		SV01	SV01B	SV02	SV02B	SV03
Port size	Rc(PT)	1/8"	1/8" (Large)	1/4"	1/4" (Large)	3/8"
Operating fluid		Air				
Operating pressure	Mpa(Kgf/cm <sup>2</sup> )	0~0.9(0~9.2)				
Proof pressure	Mpa(Kgf/cm <sup>2</sup> )	1.5(15.3)				
Temperature range	°C	5~60				
Material	Body	Plastic				
	Filter	Granule 5 μm				
Effective area	mm <sup>2</sup>	22	15	21	45	67
Silent efficiency	(dB)	14	22	26	28	24
Weight	(g)	1	4.5	5	21	24.5

## External Dimensions:

Item/Model	A Rc(PT)	B	C	D	E (Counterside)
SV 01	1/8"	ø11	10	15.9	10
SV 01B	1/8" (Large)	ø16	7	33.1	13.7
SV 02	1/4"	ø16	10	36.1	13.7
SV 02B	1/4" (Large)	ø20	10	62.4	16.6
SV 03	3/8"	ø26	12	67.3	23.5

