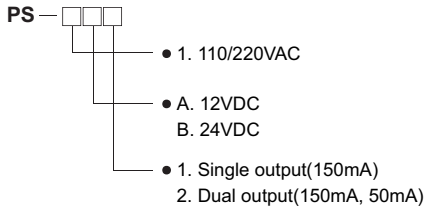


The PS power supply unit provides stabilized DC power for pressure, flow, level and soon.

Features

- It features small size & light weight
- Parallel operation of PS power supply units is possible

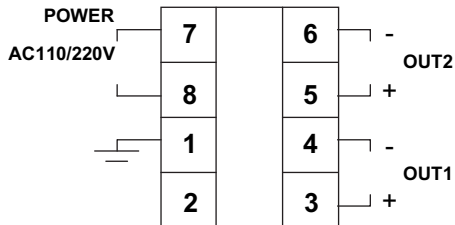
Ordering Codes



Specifications

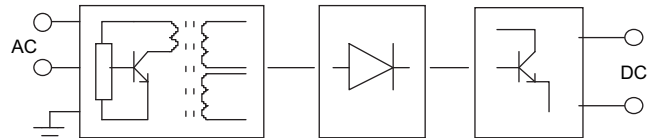
- Accuracy : $\pm 0.5\%$ OF SPAN
- Repeatability : $\pm 0.3V$ OF SPAN
- Response time :LESS THAN 0.5 SEC
- Insulation resistance :MORE THAN 100M Ω (500VDC)
- Ambient :0 - 50 $^{\circ}C$
- Ambient humidity :LESS THAN 85% RH

Connections

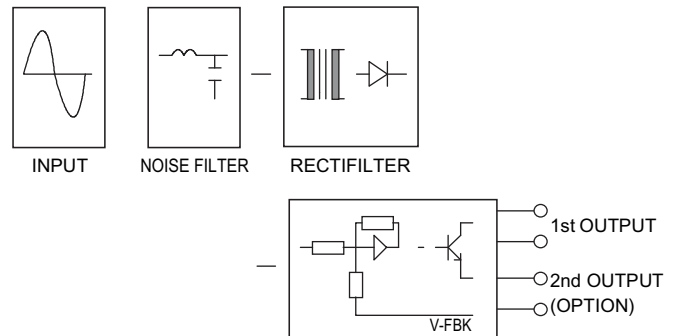


Functions

• Block diagram

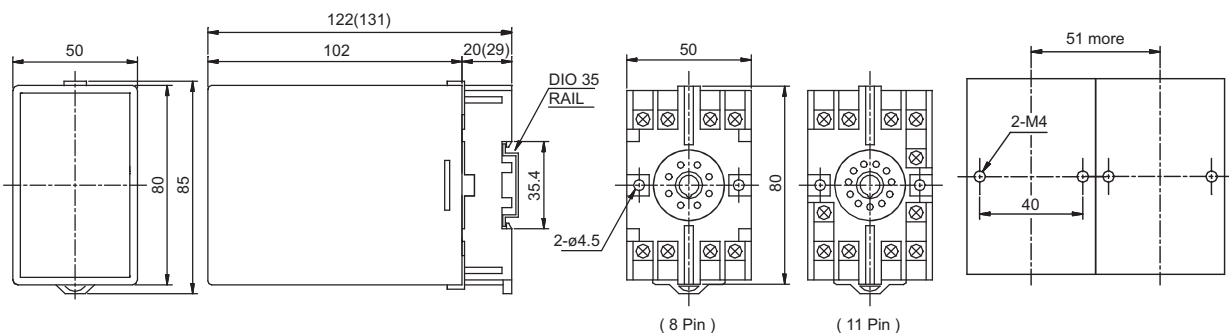


• Function diagram



Dimensions, Panel Cutout

(Unit : mm)



* () is 11Pin Type.