

Features:

C-frame design, solidly constructed, with flexible and mobile characters to suit production line.

Simple hydraulic circuit design, low power consumption, easy to maintain.

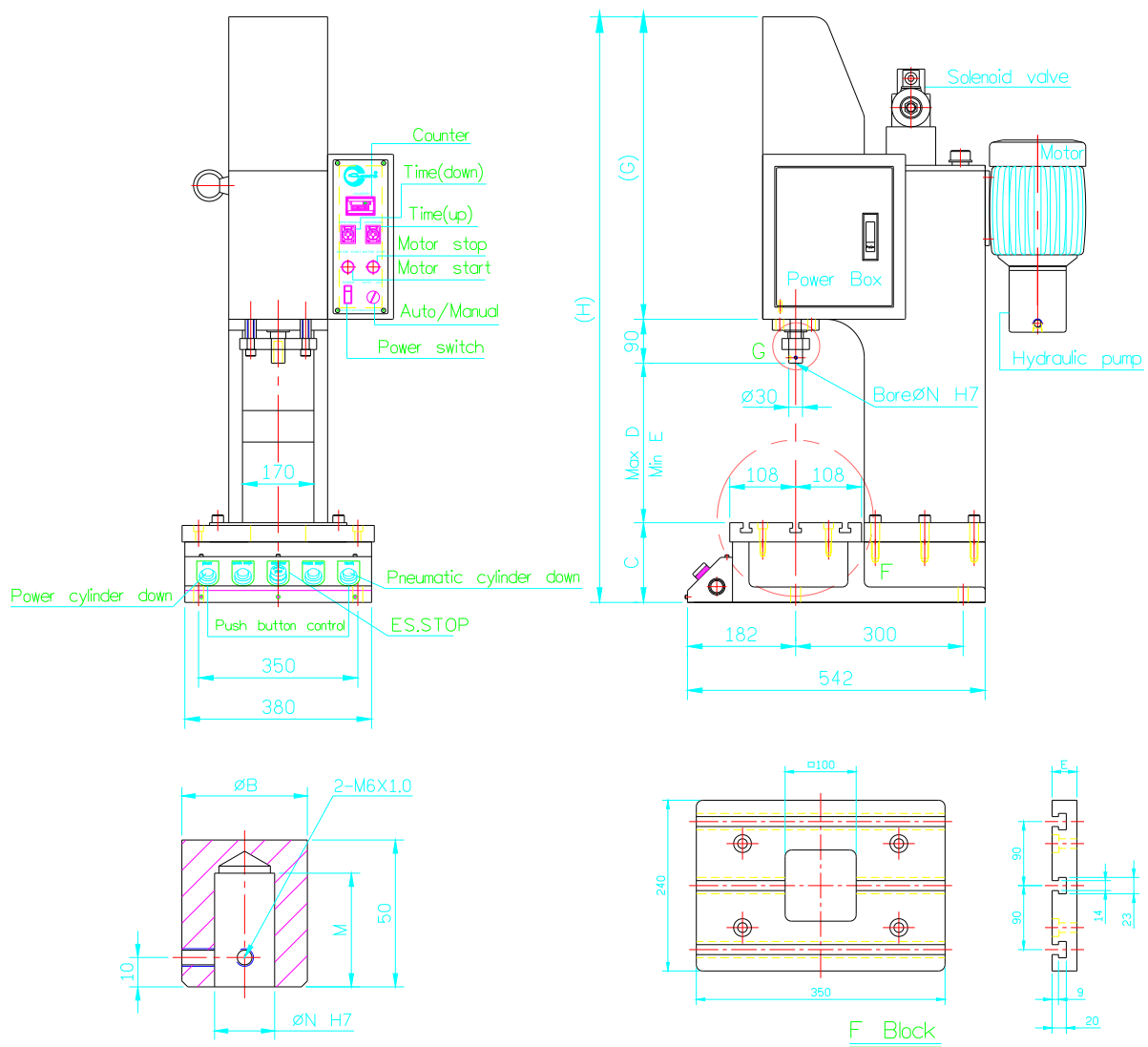
Thread ram for easy replacement of fixtures.

Use dual push-button operation and safety control circuit.

Widely used in the applications like pressing, forming, joining, assembling, cutting, stamping, bending and riveting, etc.l.



External Dimensions:



TYPE	A	B	C	D	E	F	G	H	J	K	L	M	N	P	Q
HHC-01T	130	25	185	280	130	90	570	1125	182	300	750	40	16	M6x1.0	400
HHC-03T	170	30	185	245	95	90	600	1120	182	300	771	40	16	M8x1.25	430
HHC-05T	170	40	185	245	95	90	600	1120	182	300	771	40	20	M8x1.25	430

Specifications:

TYPE	HHC-01T	HHC-03T	HHC-05T
Output	0.4~1 ton	0.9~3 ton	3.5~5 ton
Stroke range	100~150mm	100~150mm	100~150mm
Hydraulic cylinder (bore x stroke)	$\varnothing 50 \times 150$ mm	$\varnothing 63 \times 150$ mm	$\varnothing 80 \times 150$ mm
Ram approach speed	180 mm/sec	100 mm/sec	125 mm/sec
Ram press speed	80 mm/sec	35 mm/sec	37 mm/sec
Ram return speed	140 mm/sec	53 mm/sec	57 mm/sec
Operation pressure range	5.88~7.84(60~80kg/cm ²)	5.88~10.2(60~104kg/cm ²)	6.86~9.61(70~98kg/cm ²)
Ram hole	$\varnothing 16 \times 40$ dp	$\varnothing 16 \times 40$ dp	$\varnothing 20 \times 40$ dp
Power	3 \varnothing AC220V, 50/60Hz	3 \varnothing AC220V, 50/60Hz	3 \varnothing AC220V, 50/60Hz
Motor output	0.75 kW(1 HP)	1.5 kW(2 HP)	2.25 kW(3 HP)
Stroke type	Slightly move safe stroke	Slightly move safe stroke	Slightly move safe stroke
Operation manual	Manual operation	Manual operation	Manual operation
Oil capacity	12L	14L	15L
Body weight	approx. 420kg (including hydraulic oil)	approx. 458kg (including hydraulic oil)	approx. 490kg (including hydraulic oil)

✕ We reserve the right to revise the external dimension.