

Background and Foreground Suppression Ph. Sens.



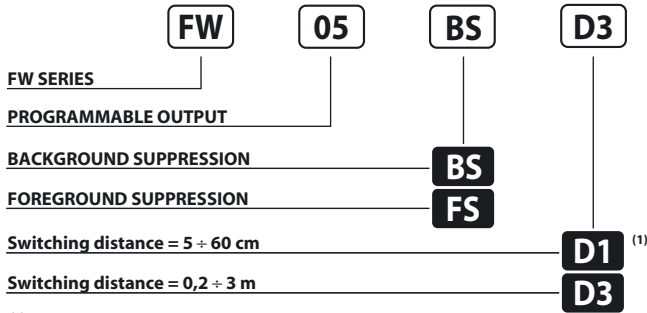
PH. SENSORS IN RECTANGULAR HOUSING 15÷230 V AC/DC RELAY OUTPUT

- **Switching distance: 300 cm**
- **Detecting black targets on white background**
- **Insensitive to colours**
- **Foreground suppression**
- **Conduit wiring terminal block**

FW Series

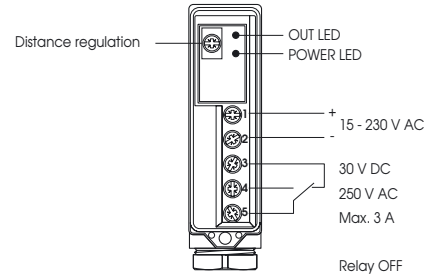


Identification code



⁽¹⁾ Available only with option FS - not available with option BS

Wiring diagrams



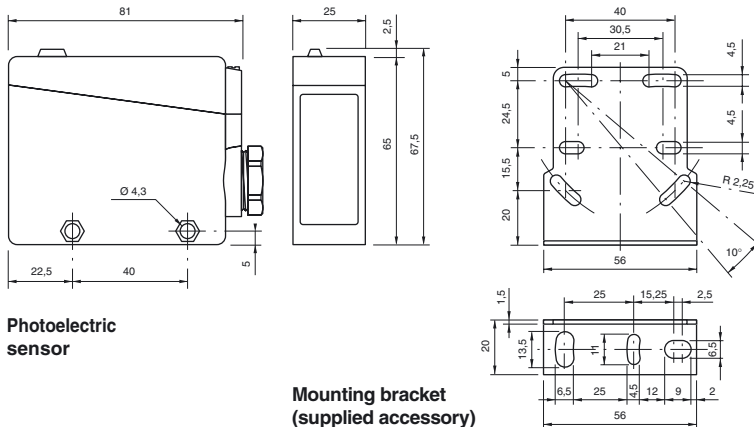
AVAILABLE	D1	D3
NOMINAL SWITCHING DISTANCE (Sn)	60 cm ⁽¹⁾	2 m ⁽¹⁾ (On White Target 3 m ⁽¹⁾)
TOLERANCE	+10/-10 %Sn	
HYSTERESIS	< 5%	
EMISSION	880 nm	
NOMINAL VOLTAGE	15 ÷ 230 V AC/DC (-15 /+10%)	
NET FREQUENCY	45 ÷ 60 Hz	
OUTPUT	Relay (40x10 ⁶ mec. op. -5x10 ⁶ elect. op.)	
MAX OUTPUT CURRENT	3A 250 V AC - 3A 30 V DC	
ABSORPTION	≤ 2W (2,5 V A)	
YELLOW LED	Light on indicator	
GREEN LED	Supply indicator	
SENSITIVITY ADJUSTMENT	Present	
SWITCHING FREQUENCY	10 Hz	
RESPONSE TIME	100 mS	
START UP DELAY	≤ 300 mS	
TEMPERATURE LIMITS	-10° ÷ +60°C	
LIGHT IMMUNITY	> 10.000 Lux ⁽²⁾	
PROTECTION DEGREE	IP 66	
CONNECTIONS	Screw	
CABLE GUIDE	PG 13.5	
HOUSING MATERIAL	Housing: ABS - Lenses: methacrylate	
WEIGHT (Approximately)	110 g	

⁽¹⁾ Determined with a white mat paper (cm 20 x 20).

⁽²⁾ Determined with halogen tungsten lamp 3000° K.

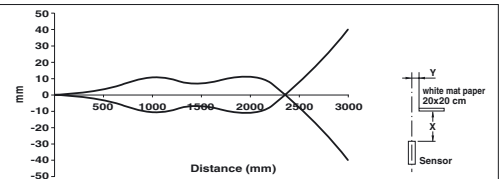
Note: for a proper use see norms at pages 14, 15, 16, 17 and 18.

Dimensions (mm)

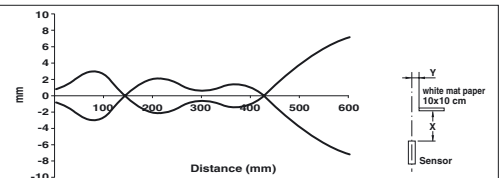


Characteristic curves

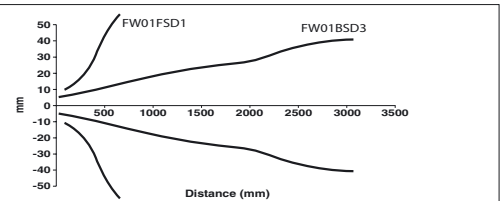
Emission curve FW01BSD3



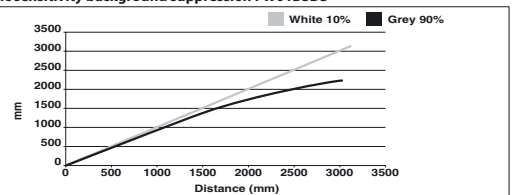
Emission curve FW01FSD1



Emission cone



Chromatic sensitivity background suppression FW01BSD3



Chromatic sensitivity foreground suppression FW01FSD1

