

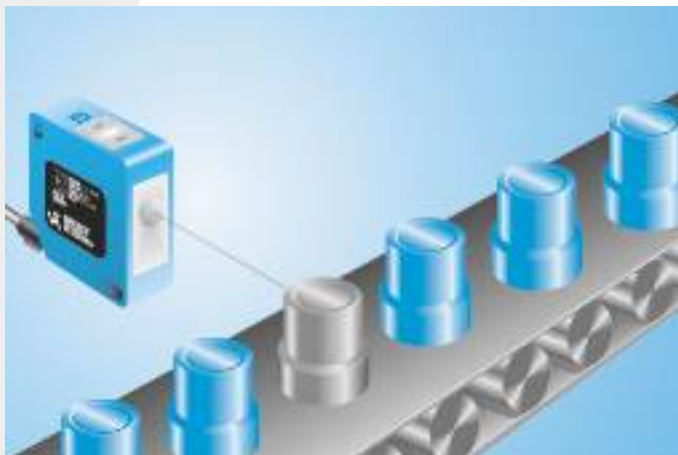
FP04PCT80

Part Number



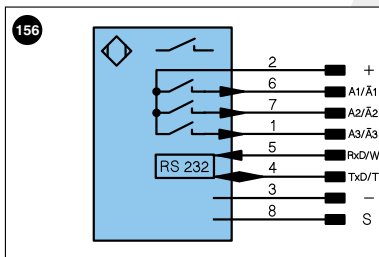
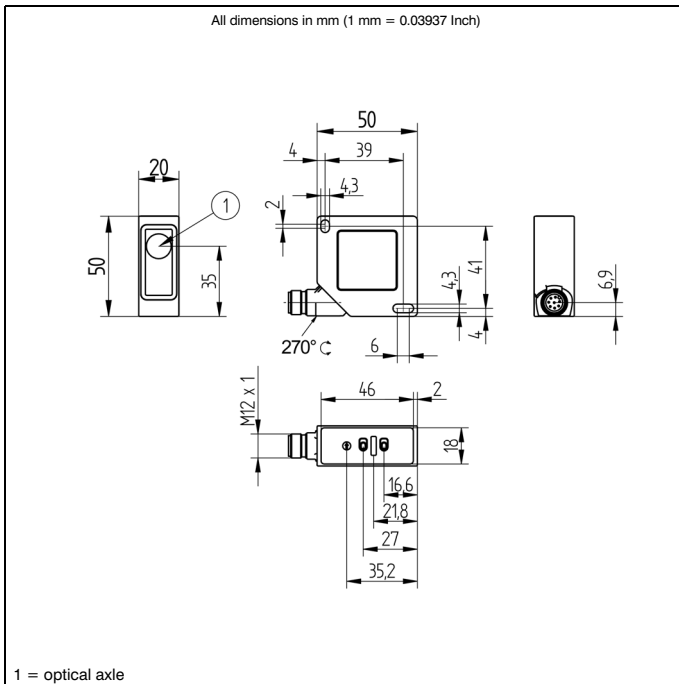
- Extremely fine color nuances can be recognized
- Reflex mode operation
- RGB signal via the RS-232 Interface
- Teach-In and external Teach-In

This color sensor is capable of evaluating up to three colours simultaneously. A small spot and a large working range are made possible thanks to single-lens optics. All sensor settings can be selected by means of Teach-In, as well as via the RS-232 interface. Values generated by the sensor can be read out via the interface or digital switching outputs. The sensor has 3 PNP switching outputs and supplies RGB color values via the interface.



Technical Data

Optical Data	
Working Range	30...40 mm
Working Distance	35 mm
Light Source	White Light
Service Life (T = +25°C)	100000 h
max. Ambient Light	10000 Lux
Light Spot Diameter	2 mm
Electrical Data	
Supply Voltage	10...30 V
Current Consumption (U _b = 24V)	< 50 mA
Switching Frequency	1660 Hz
Response Time	300 μs
On-/Off-Delay	0...1 s
Temperature Range	-25...60 °C
Switching Outputs	3
Switching Output Voltage Drop	1,5 V
PNP Switching Output/Switching Current	200 mA
Short Circuit Protection	yes
Reverse Polarity Protection	yes
Teach Mode	FT
Interface	RS-232
Baud Rate	38400 Bd
Digital Inputs	2
Mechanical Data	
Adjustment	Teach-In
Housing	Plastic
Degree of Protection	IP67
Connection	M12 x 1
Protective Insulation, Rated Voltage	50 V
PNP NO/NC switchable	●
RS-232 Interface	●
Connection Diagram No.	156
Control Panel No.	P 4
Suiting Connection Technology No.	80
Suiting Mounting Technology No.	380



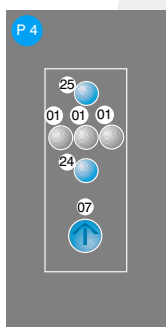
Legend			
+	Supply Voltage +	U	Test Input
-	Supply Voltage 0V	Ū	Test Input inverted
~	Supply Voltage (AC Voltage)	W	Trigger Input
A	Switching Output (1,2,3...)/NO	O	Analog Output
Ā	Switching Output (1,2,3...)/NC	O-	Ground for the Analog Output
V	Contamination/Error Output (NO)	BZ	Block Discharge
V̄	Contamination/Error Output (NC)	AwV	Valve Output
E	Input (analog or digital)	a	Valve Control Output +
T	Teach Input	b	Valve Control Output 0V
Z	Time Delay (activation)	SY	Synchronization
S	Shielding	E+	Receiver-Line
RxD	RS-232 Receive Path	S+	Emitter-Line
TxD	RS-232 Send Path	±	Grounding
RDY	Ready	SnR	Switching Distance Reduction
GND	Ground	USBD+	USB data +
CL	Clock	USBD-	USB data -
E/A	Output/Input programmable	Bus	Interfaces-Bus A(+)/B(-)
	IO-Link	La	Emitted Light disengageable

Wire Colors according to DIN IEC 757	
BK	Black
BN	Brown
RD	Red
OG	Orange
YE	Yellow
GN	Green
BU	Blue
VT	Violet
GY	Grey
WH	White
PK	Pink
GNYE	Green Yellow

Complimentary Products

- Protection Housing Set ZSP-NN-02
- Protection Housing ZSV-0x-01
- Serial Interface Adapter S232W3

Ctrl.Panel



- 01 = Switching Status Indicator
- 07 = Selector Switch
- 24 = Plus Button
- 25 = Minus Button