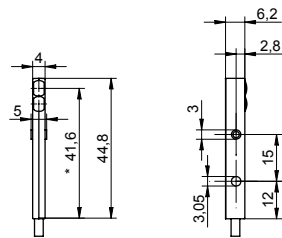


## Diffuse sensors with background suppression

### FHDK 04

#### sample drawing



\* emitter axis

#### general data

type	background suppression
light source	pulsed point source LED
alignment / soiled lens indicator	flashing light indicator
light indicator	LED yellow
wave length	660 nm
beam diameter	2 mm
suppression of reciprocal influence	yes

#### electrical data

response time / release time	< 0,5 ms
voltage supply range +Vs	11 ... 30 VDC
current consumption max.	30 mA
current consumption typ.	20 mA
voltage drop Vd	< 2 VDC
output circuit	push-pull
output current	< 50 mA
short circuit protection	yes
reverse polarity protection	yes, supply only

#### mechanical data

width / diameter	4 mm
height / length	44,8 mm
depth	6,2 mm
type	rectangular
housing material	plastic (ASA)
front (optics)	PMMA

#### ambient conditions

operating temperature	-10 ... +50 °C
protection class	IP 65

#### sample picture



**Diffuse sensors with  
background suppression****FHDK 04**

<b>order reference</b>	<b>sensing distance Tw</b>	<b>connection types</b>	<b>output function</b>
<b>FHDK 04G6101</b>	30 mm $\pm$ 2 mm	cable 3 pin, 2 m	light operate
<b>FHDK 04G6101/KS35A</b>	30 mm $\pm$ 2 mm	flylead connector M8 4 pin	light operate
<b>FHDK 04G6102</b>	50 mm $\pm$ 3 mm	cable 3 pin, 2 m	light operate
<b>FHDK 04G6102/KS35A</b>	50 mm $\pm$ 3 mm	flylead connector M8 4 pin	light operate
<b>FHDK 04G6111</b>	30 mm $\pm$ 2 mm	cable 3 pin, 2 m	dark operate
<b>FHDK 04G6111/KS35A</b>	30 mm $\pm$ 2 mm	flylead connector M8 4 pin	dark operate
<b>FHDK 04G6112</b>	50 mm $\pm$ 3 mm	cable 3 pin, 2 m	dark operate
<b>FHDK 04G6112/KS35A</b>	50 mm $\pm$ 3 mm	flylead connector M8 4 pin	dark operate