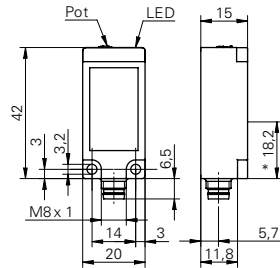


Through beam sensors

FEDK 20

sample drawing



* receiver axis

general data

type	through beam sensor
emitter / receiver	receiver
actual range S_b	6 m
nominal range S_n	8 m
alignment / soiled lens indicator	flashing light indicator
light indicator	LED yellow
sensitivity adjustment	potentiometer, 270°

electrical data

response time / release time	< 0,5 ms
voltage supply range +Vs	10 ... 30 VDC
current consumption max.	20 mA
current consumption typ.	20 mA
voltage drop V_d	< 1,8 VDC
output function	light / dark operate
output current	< 100 mA
short circuit protection	yes
reverse polarity protection	yes

mechanical data

width / diameter	20 mm
height / length	42 mm
depth	15 mm
type	rectangular
housing material	plastic (PBT-ASA)
front (optics)	PMMA
connection types	connector M8 4 pin

ambient conditions

operating temperature	-25 ... +65 °C
protection class	IP 67

order reference

FEDK 20N5101/S35A
FEDK 20P5101/S35A

output circuit

NPN
PNP

sample picture

