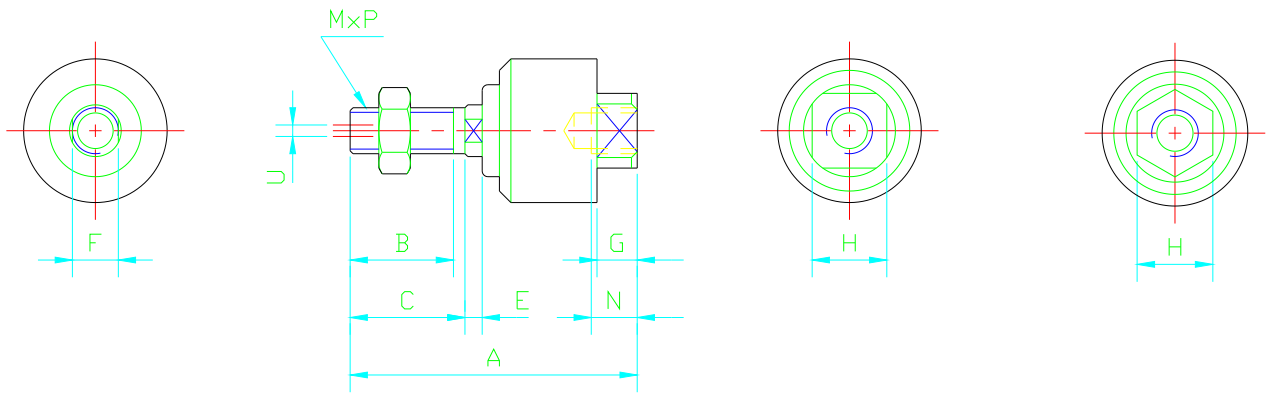


• T Type

Fig. (1)

Fig. (2)

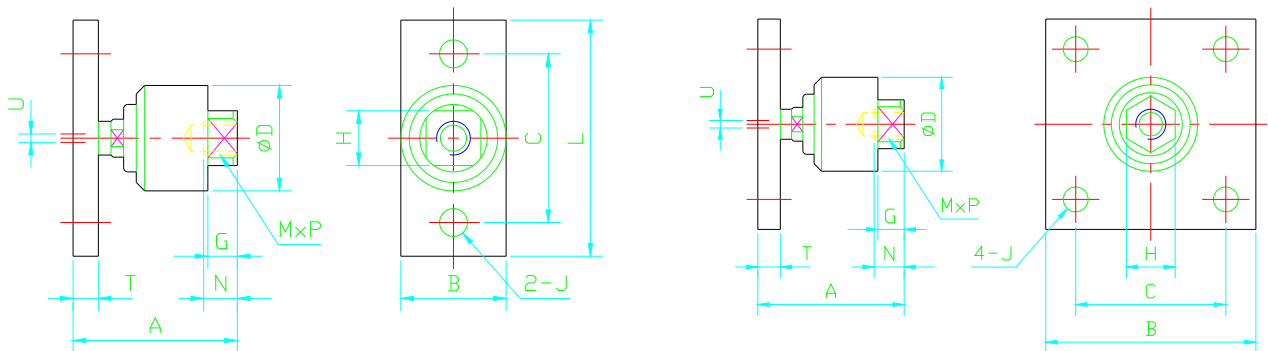


Cyl. Bore	Type	MxP	A	B	C	D	E	F	G	H	N	Permissible U deviation	Illustration
10	FC-1004T	M4x0.7	26	10	10	12	1.5	4	44	5	5	0.5	fig.-1
12,16	FC-1005T	M5x0.8	37	12.5	15	18	3	6	5	10	7	0.5	fig.-1
12,16	FC-1006T	M6x1.0	37	12.5	15	18	3	6	5	10	7	0.5	fig.-1
20	FC-1008T	M8x1.25	50	18	20	24	4	8	7	13	8	0.5	fig.-1
25,30	FC-1010T	M10x1.25	58	20	22	26	5	10	8	17	9	0.75	fig.-1
32,40	FC-1012T	M12x1.25	58	20	22	28	5	12	8	17	9	0.75	fig.-1
40	FC-1014T	M14x1.5	70	20	23	35	7	14	9	22	13	1	fig.-1
50	FC-1016T	M16x1.5	90	25	28	45	9	17	13	27	15	1.25	fig.-1
50,63	FC-1018T	M18x1.5	90	25	28	45	9	17	13	27	15	1.25	fig.-1
80,100	FC-1020T	M20x1.5	102	29	32	53	10	22	15	32	18	2	fig.-2
80	FC-1022T	M22x1.5	102	29	32	53	10	22	15	32	18	2	fig.-2
100	FC-1024T	M24x1.5	124	35	38	61	12	26	19	41	24	2.5	fig.-2
100	FC-1026T	M26x1.5	124	35	38	61	12	26	19	41	24	2.5	fig.-2
125,150	FC-1030T	M30x1.5	156	53	61	63	18	30	24	40	25	3	fig.-2
160	FC-1036T	M36x1.5	199	64	72	75	18	36	24	48	46	3	fig.-2

• F Type

Fig. (3)

Fig. (4)



Cyl. Bore	Type	MxP	A	B	L	C	D	T	J	G	H	N	Permissible U deviation	Illustration
20	FC-1008F	M8x1.25	40	25	52	40	24	6	6.6	7	13	8	0.5	fig.-3
25,30	FC-1010F	M10x1.25	44	32	56	44	26	9	6.6	8	17	9	0.75	fig.-3
32,40	FC-1012F	M12x1.25	44	32	56	44	28	9	6.6	8	17	9	0.75	fig.-3
40	FC-1014F	M14x1.5	58	38	80	60	35	12	11	9	22	13	1	fig.-3
50	FC-1016F	M16x1.5	76	74	-	45	45	15	11	13	27	15	1.25	fig.-4
50,63	FC-1018F	M18x1.5	76	74	-	45	45	15	11	13	27	15	1.25	fig.-4
80,100	FC-1020F	M20x1.5	87	100	-	62	53	18	14	15	32	18	2	fig.-4
80	FC-1022F	M22x1.5	87	100	-	62	53	18	14	15	32	18	2	fig.-4
100	FC-1024F	M24x1.5	106	100	-	70	61	21	14	19	41	24	2.5	fig.-4
100	FC-1026F	M26x1.5	106	100	-	70	61	21	14	19	41	24	2.5	fig.-4
125,150	FC-1030F	M30x1.5	120	100	-	70	63	21	14	24	40	25	3	fig.-4

• L Type

Fig. (5)

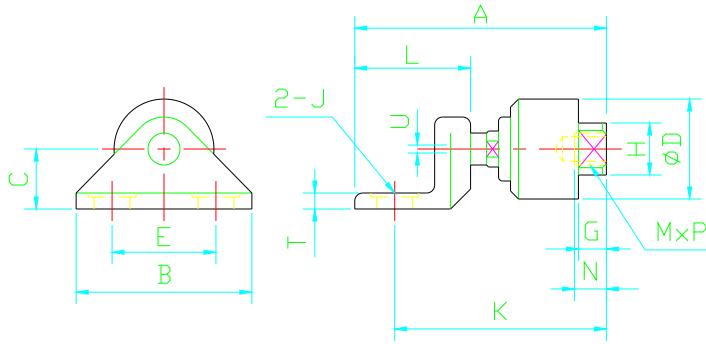
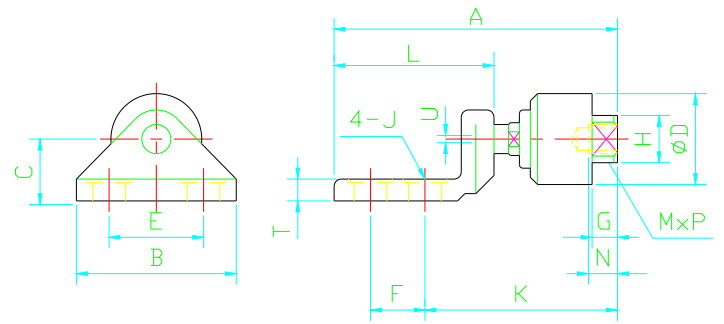


Fig.(6)



Cyl. Bore	Type	MxP	A	B	C	D	E	F	K	L	T	J	G	H	N	Permissible U deviation	Illustration
20	FC-1008L	M8x1.25	63	44	15	24	26	-	53	29	4	9	7	13	8	0.5	fig.-5
25,30	FC-1010L	M10x1.25	74	44	19	26	26	-	63	35	5	9	8	17	9	0.75	fig.-5
32,40	FC-1012L	M12x1.25	71	44	19	28	26	-	60	35	5	9	8	17	9	0.75	fig.-5
40	FC-1014L	M14x1.5	106	66	22	35	36	-	90	56	10	14	9	22	13	1	fig.-5
50	FC-1016L	M16x1.5	151	60	28	45	32	32	105	90	15	11	13	27	15	1.25	fig.-6
50,63	FC-1018L	M18x1.5	151	60	28	45	32	32	105	90	15	11	13	27	15	1.25	fig.-6
80,100	FC-1020L	M20x1.5	178	68	35	53	36	36	124	106	20	14	15	32	18	2	fig.-6
80	FC-1022L	M22x1.5	178	68	35	53	36	36	124	106	20	14	15	32	18	2	fig.-6
100	FC-1024L	M24x1.5	201	68	42	61	36	36	148	112	20	14	19	41	24	2.5	fig.-6
100	FC-1026L	M26x1.5	201	68	42	61	36	36	148	112	20	14	19	41	24	2.5	fig.-6

• Example For Installation

