

## Features:

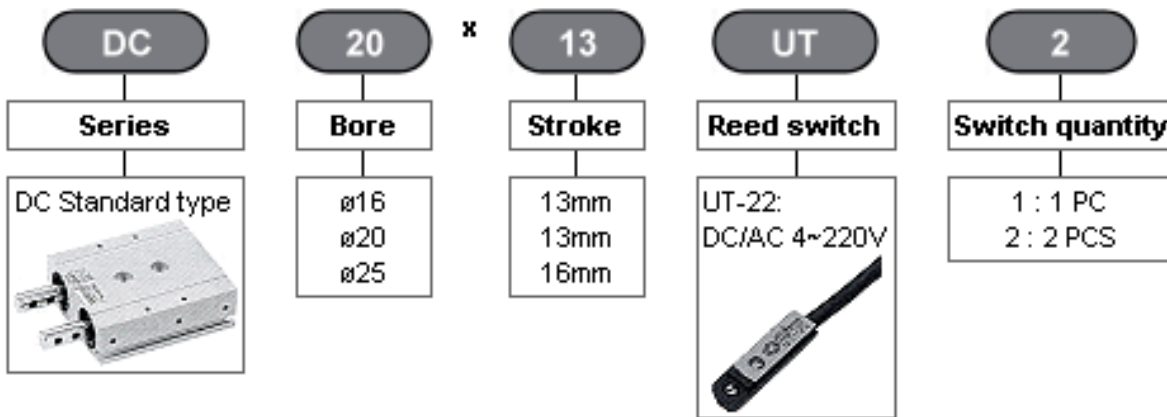
- Two built-in cylinders save more spaces than conventional cylinders.
- Reduce one piece of solenoid valve and reed switch in controlling for cost saving.
- Allow parts to be presented individually as they move from a feeder bowl or magazine, suitable for assembly line.
- Piston rod end equipped with tapped holes for any type of toolings attached. It also can be adjusted for various orientation.



## Specifications:

<b>Action</b>	Double acting type
<b>Series</b>	DC
<b>Bore</b>	ø16, ø20, ø25
<b>Stroke</b>	13, 13, 16
<b>Operating fluid</b>	Compressed air
<b>Operating pressure</b>	1-7kgf/cm <sup>2</sup>
<b>Proof pressure</b>	10.5kgf/cm <sup>2</sup>
<b>Speed range</b>	100~500mm/sec
<b>Temperature range</b>	-10°C~+70°C
<b>Cushion</b>	None
<b>Lubrication</b>	Not required

## How to Order:



## Motion Example:

Fig (1)

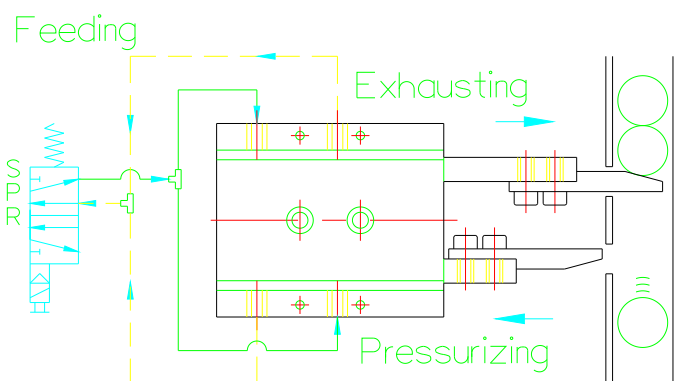
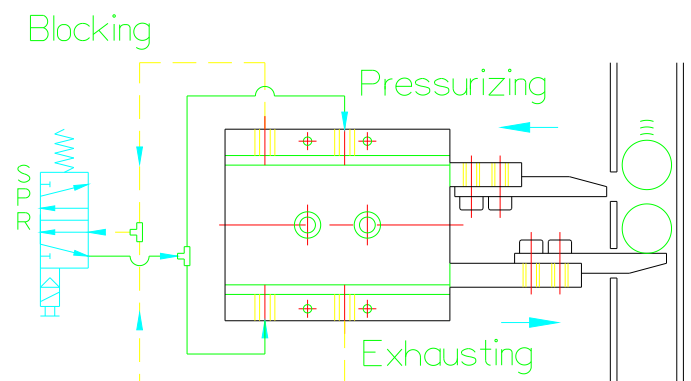
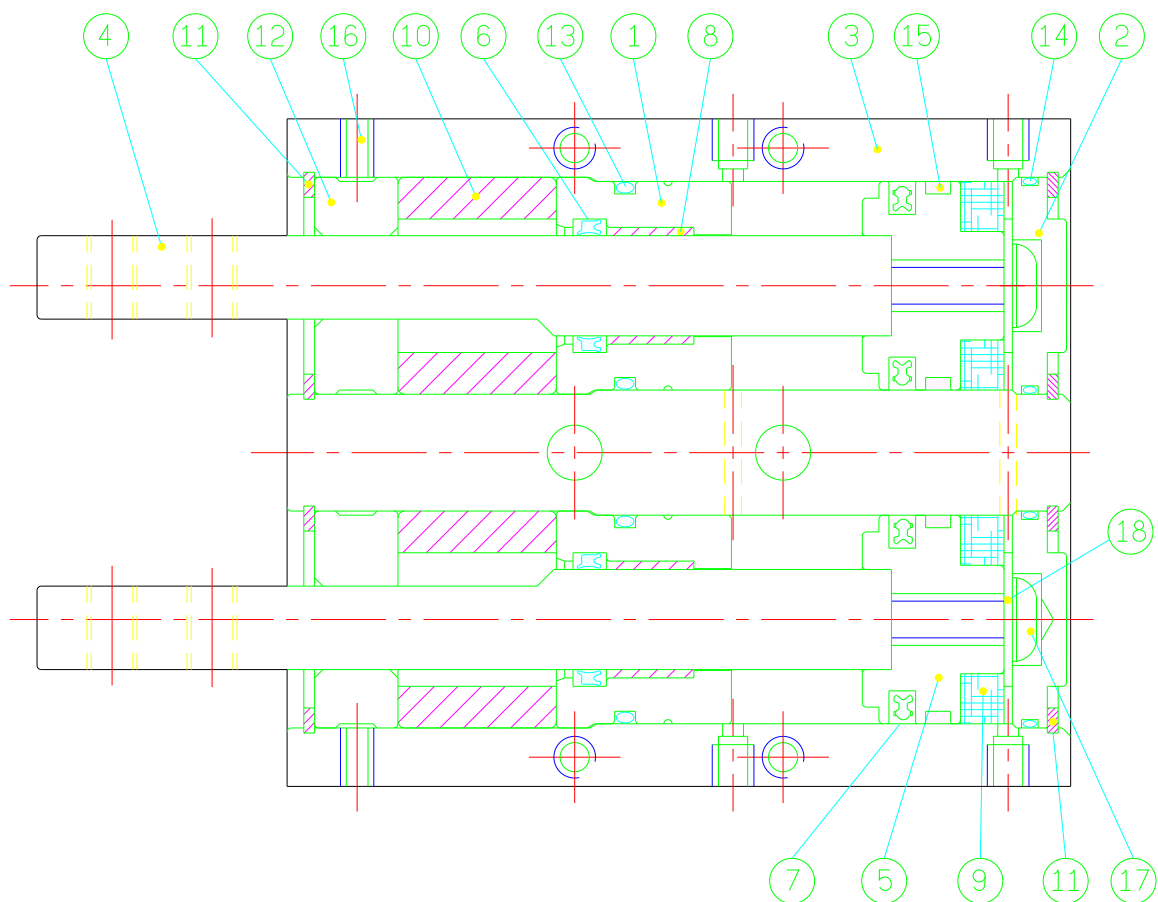


Fig (2)



## Internal Constructions:



## Parts List:

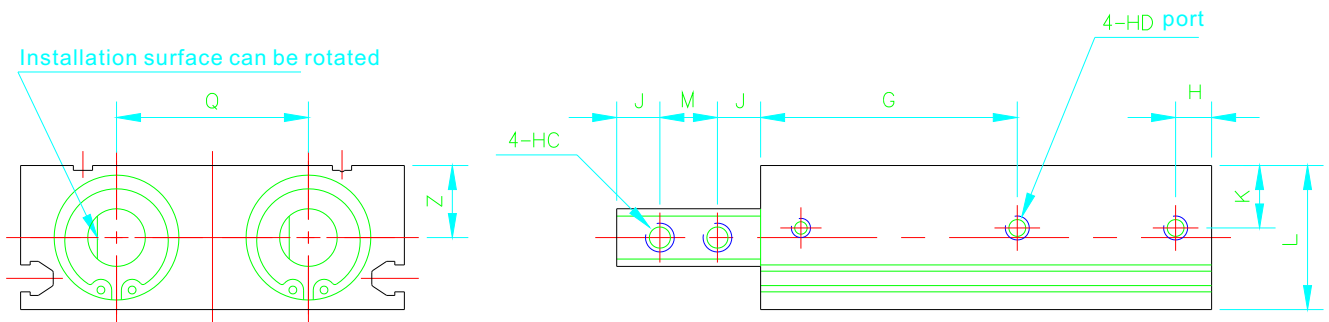
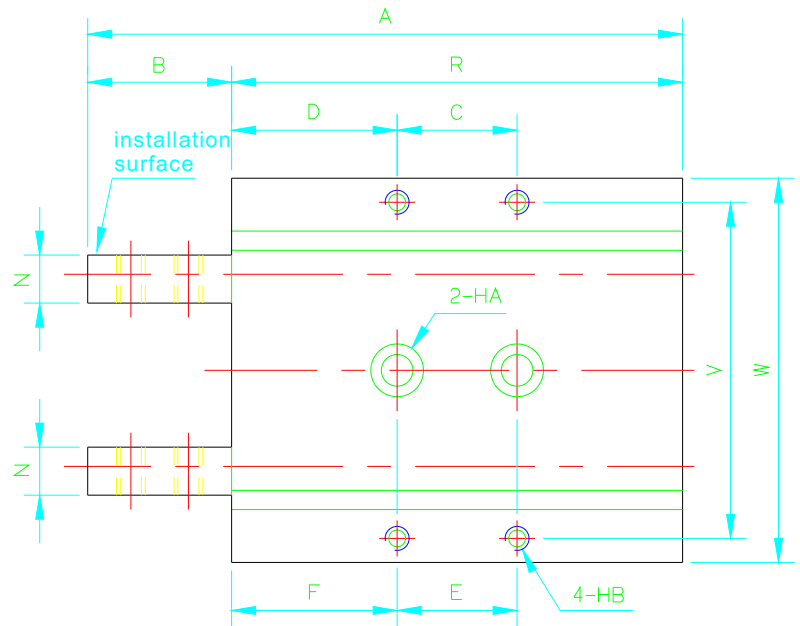
NO	Description	Material	Qty
1	Front end cover	Anodized aluminium alloy	2
2	Rear end cover	Anodized aluminium alloy	2
3	Housing	Anodized aluminium alloy	1
4	Piston rod	Hard chrome plated carbon steel	2
5	Piston	Aluminium alloy	2
6	Rod seal	NBR	2
7	Piston seal	NBR	2
8	Bush	Oil filled, sintered bronze	2
9	Magnet	Resinous magnet	2
10	Collar	Aluminium alloy	2
11	Snap ring	SK5M	4
12	Anti-rotation collar	POM	2
13	Front end cover seal	NBR	2

NO	Description	Material	Qty
14	Rear end cover seal	NBR	2
15	Wear ring	POM	2
16	Set screw	Carbon steel	2
17	Set screw	Stainless steel	2
18	Flat washer	Stainless steel	2

## Seals List:

Bore/Desc.	6 Piston rod seal	7 Piston seal	13 Front end cover seal	14 Rear end cover seal
ø16	DRP8	COP16	SM12	SM12
ø20	DRP10	COP20	SM16	SM16
ø25	DRP12	COP25	SM21	SM21

# External Dimensions:



Bore	2-HA	4-HB	4-HC	4-HD
ø16	ø5.2 thru hole ø10 dp 5.4 (Both sides)	M5x0.8 dp 9 (counter side)	M4x0.7 thru hole	M5x0.8
ø20	ø5.2 thru hole ø10 dp 5.4 (Both sides)	M5x0.8 dp 10 (counter side)	M5x0.8 thru hole	M5x0.8
ø25	ø6.6 thru hole ø11 dp 6.5 (Both sides)	M5x0.8 dp 5 (counter side)	M6x1.0 thru hole	M5x0.8

Bore	A	B	C	D	E	F	G	H	M	J	K	L	N	Q	R	V	W	Y	Z
ø16	105	20	25	30.5	21	32	47.5	7.5	8	6	8	21	7	24	85	48	57	8	10.5
ø20	113	25	25	31	28	30	49.5	7.5	10	7.5	11	25	8	28	88	58	65	10	12.5
ø25	124	30	25	34.5	25	34.5	53.5	7.5	12	9	13	30	10	40	94	70	80	12	15

## Reed Switch Mounting: Use UT-11N (Voltage: DC5~30V) UT-22(Voltage: AC220V)

