


# BA2M-DDT

## Small size, long distance diffuse reflective type

### ■ Features



- Capability of detecting long distance (2m) by special optical design.
- Stable received light indicator built in.
- Sensitivity adjustment function built in.
- 2 color LED display.



 Please read "Caution for your safety" in operation manual before using.



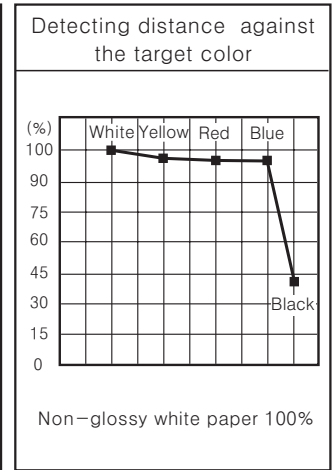
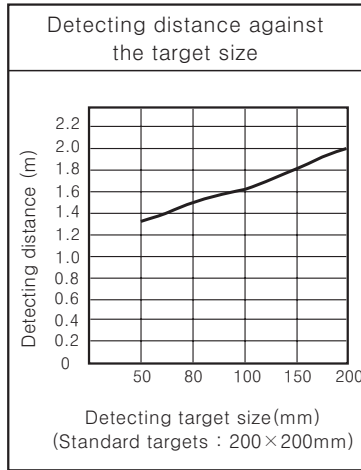
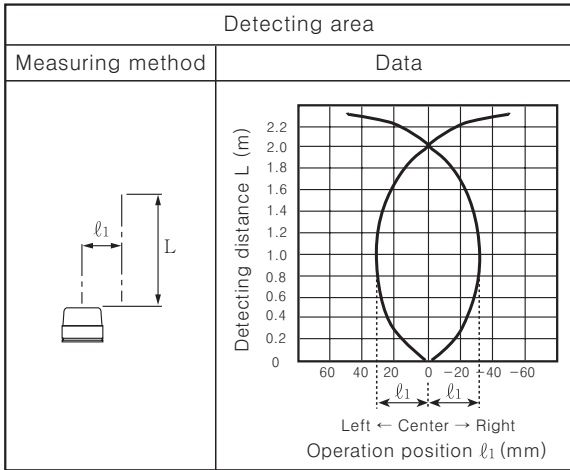
### ■ Specifications

Model	BA2M-DDT
Type	Diffuse reflective
Detecting distance(※)	2m
Detecting target	Transparent, Translucent, Opaque material
Hysteresis	Max. 20% at rated setting distance
Response time	Approx. 1ms
Power supply	12-24VDC $\pm$ 10% (Ripple P-P : Max. 10%)
Current consumption	Max. 15mA (Max. 30mA when the output is ON)
Light source	Infrared LED (850nm modulated) □
Sensitivity adjustment	Adjustable VR
Operation mode	Light ON (Dark ON mode is optional)
Control output	NPN open collector output  Load voltage : Max. 30VDC, Load current : Max. 100mA, Residual voltage : Max. 1V
Protection circuit	Reverse polarity protection, Output short-circuit protection
Receiver	Photo diode (Built-in IC) □
Indication	2 color LED [Operation : Red, Stability : Yellow (Red+Green)]
Insulation resistance	Min. 20M $\Omega$ (at 500VDC)
Noise strength	$\pm$ 240V the square wave noise (pulse width: 1 $\mu$ s) by the noise simulator
Dielectric strength	1000VAC 50/60Hz for 1minute
Vibration	1.5mm amplitude at frequency of 10 ~ 55Hz in each of X, Y, Z directions for 2 hours
Shock	100m/s <sup>2</sup> (10G) in X, Y, Z directions for 3 times
Ambient illumination	Sunlight : Max. 10,000lx, Incandescent lamp : Max. 3,000lx
Ambient temperature	-20 ~ +55 $^{\circ}$ C (at non-freezing status), Storage : -25 ~ +70 $^{\circ}$ C
Ambient humidity	35 ~ 85%RH
Protection	IP50 (IEC specification)
Material	Case : PBT, Lens : PMMA
Cable	3P, $\phi$ 3mm, Length : 2m
Accessory	Sensitivity adjustment tool
Approval	
Weight	Approx. 50g

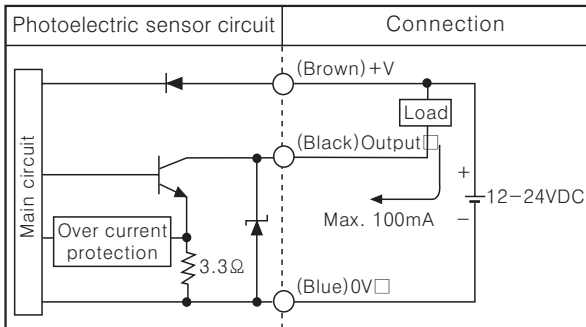
(※) It is for Non-glossy white paper (200 $\times$ 200mm).

# DC Long Distance Diffuse Type

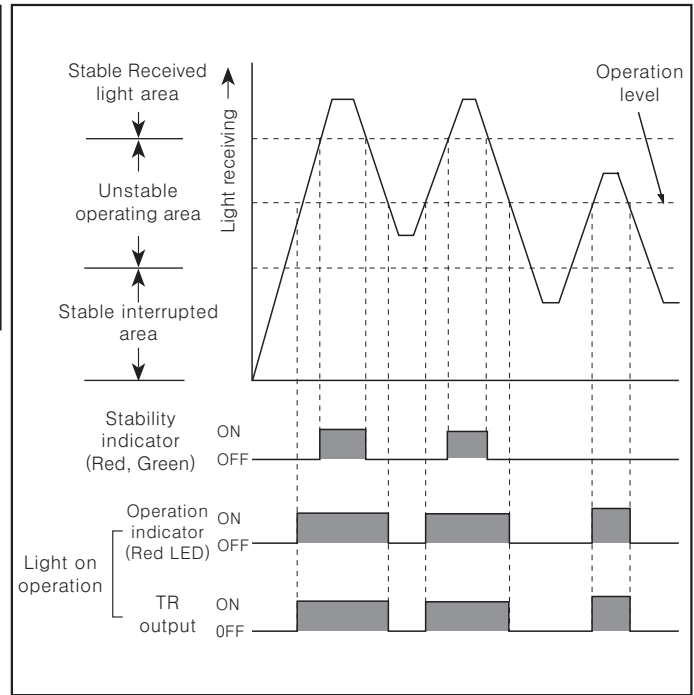
## Characteristic



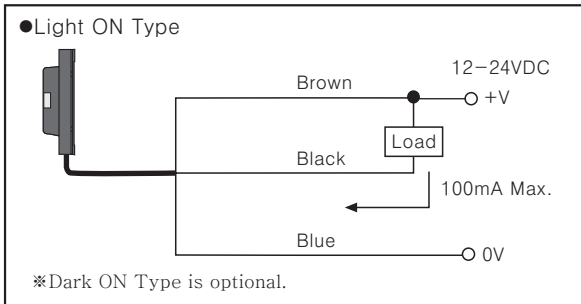
## Control output diagram



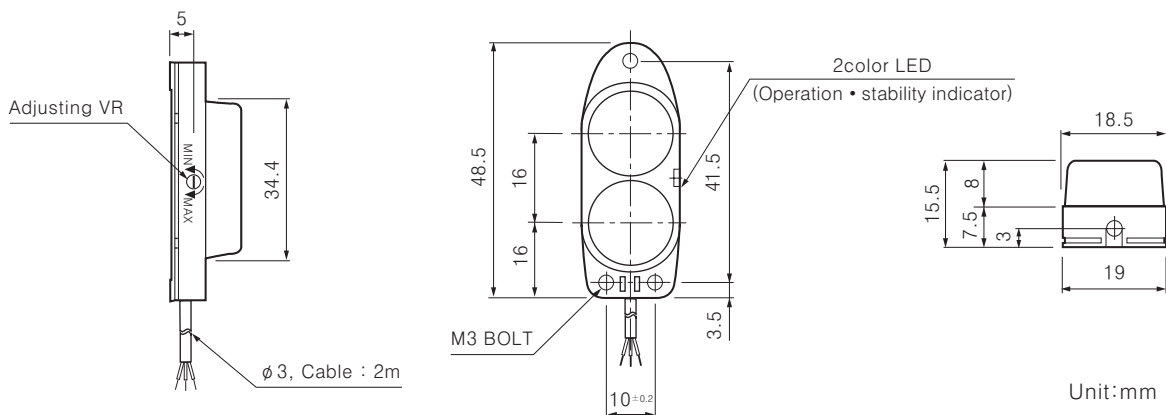
## Operation mode



## Connections



## Dimensions



(A) Counter

(B) Timer

(C) Temp. controller

(D) Power controller

(E) Panel meter

(F) Tacho/Speed/Pulse meter

(G) Display unit

(H) Sensor controller

(I) Proximity sensor

(J) Photo electric sensor

(K) Pressure sensor

(L) Rotary encoder

(M) 5-Phase stepping motor & Driver & Controller