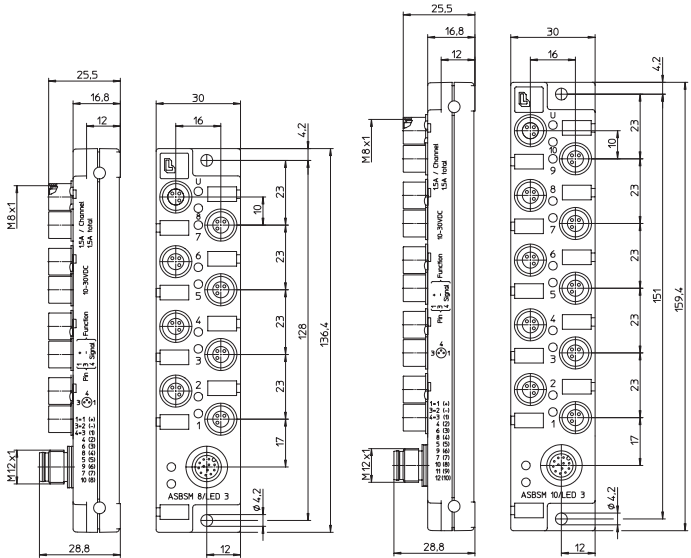
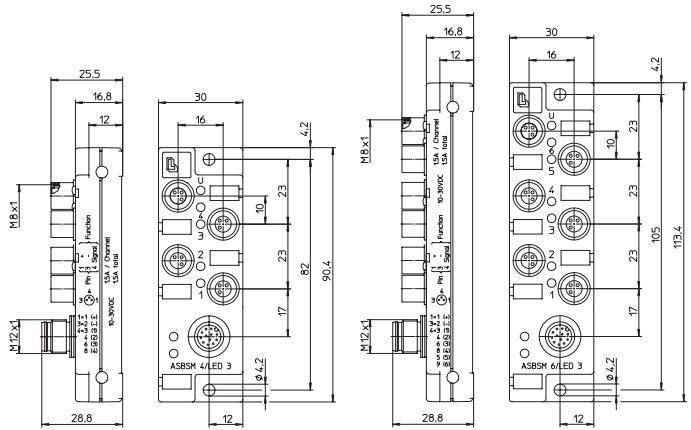


**ASBSM.../LED**

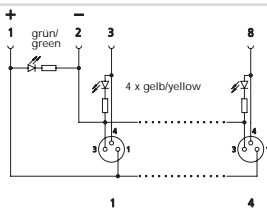
Steckbarer Miniatur-Aktor-/ Sensor-Verteiler mit LED-Betriebs- und Funktionsanzeige, 4- bis 10-fach, M8-Buchse, 3-polig, 1 Signal pro Buchse, M12-Steckverbindung für die Zuleitung (Typ: RKT 12-348/...M)

Pluggable miniature actuator/ sensor distribution box with LED operation and function indicators, 4-10 ports, M8 socket, 3 poles, 1 signal per socket, M12 connection for the control cable (type: RKT 12-348/...M)



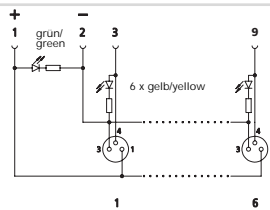
**Pinbelegung / Schaltbild**  
Pin assignment / wiring diagram

**4-fach**  
4 ports



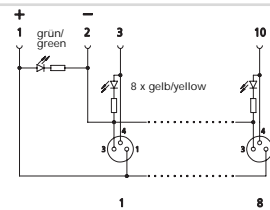
- 1 = 1 (+)
- 3 = 2 (-)
- 4 = 3 (1)
- 4 = 2 (2)
- 6 = 3 (3)
- 8 = 4 (4)

**6-fach**  
6 ports



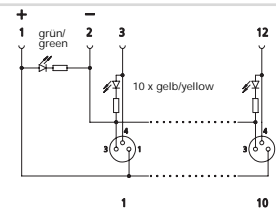
- 1 = 1 (+)
- 3 = 2 (-)
- 4 = 3 (1)
- 4 = 2 (2)
- 6 = 3 (3)
- 8 = 4 (4)
- 5 = 5 (5)
- 9 = 6 (6)

**8-fach**  
8 ports

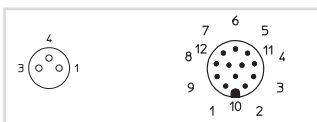


- 1 = 1 (+)
- 3 = 2 (-)
- 4 = 3 (1)
- 4 = 2 (2)
- 6 = 3 (3)
- 8 = 4 (4)
- 5 = 5 (5)
- 7 = 6 (6)
- 10 = 8 (8)

**10-fach**  
10 ports



- 1 = 1 (+)
- 3 = 2 (-)
- 4 = 3 (1)
- 4 = 2 (2)
- 6 = 3 (3)
- 8 = 4 (4)
- 5 = 5 (5)
- 7 = 6 (6)
- 10 = 8 (8)
- 11 = 9 (9)
- 12 = 10 (10)



<p><b>Technische Daten</b></p> <p><b>Umgebungstemperatur</b>            -25°C / +70°C</p> <p><b>Werkstoffe</b></p> <p>Gehäuse                                    PBT</p> <p>Kontaktträger                            PA, selbstverlöschend</p> <p>Kontakt M8                                CuSn, unternickelt und 0,8 µm vergoldet</p> <p>Kontakt M12                                CuZn, unternickelt und 0,8 µm vergoldet</p> <p>Gewindebuchse                            CuZn, vernickelt</p> <p>O-Ring                                        FKM</p> <p><b>Mechanische Daten</b></p> <p>Schutzart                                    IP 67</p> <p style="padding-left: 20px;">Nur im verschraubten Zustand mit den dazugehörigen Gegenstücken oder Schutzkappen.</p> <p><b>Elektrische Daten</b></p> <p>Durchgangswiderstand                    ≤ 5 m Ω</p> <p>Nennstrom bei 40°C                        1,5 A pro Steckplatz / 1,5 A max. gesamt</p> <p>Nennspannung                                10–30 V DC</p> <p>Isolationswiderstand                        &gt; 10<sup>9</sup>Ω</p> <p>Verschmutzungsgrad                        3</p> <p><b>Zubehör (inkl.)</b></p> <p>ZVKM                                        2 M8-Schutzkappen für nicht belegte Kupplungsgehäuse</p> <p>ZBR 5/10                                      Beschriftungsschilder: 4-fach:                    5 Stück 6- bis 8-fach:            10 Stück 10-fach:                    15 Stück</p>	<p><b>Technical data</b></p> <p><b>Operating temperature range</b>    -25°C / +70°C</p> <p><b>Materials</b></p> <p>Housing                                        PBT</p> <p>Insert    PA, self-extinguishing</p> <p>Contact M8                                    CuSn, pre-nickeled and 0.8 microns gold-plated</p> <p>Contact M12                                    CuZn, pre-nickeled and 0.8 microns gold-plated</p> <p>Receptacle shell                                CuZn, nickel-plated</p> <p>O-ring    FKM</p> <p><b>Mechanical data</b></p> <p>Degree of protection                        IP 67</p> <p style="padding-left: 20px;">Only in locked position with its proper counterparts or dust covers.</p> <p><b>Electrical data</b></p> <p>Contact resistance                            ≤ 5 m Ω</p> <p>Nominal current at 40°C                    1.5 A per outlet / 1.5 A max. total</p> <p>Nominal voltage                                10–30 V DC</p> <p>Insulation resistance                        &gt; 10<sup>9</sup>Ω</p> <p>Pollution degree                                3</p> <p><b>Accessories (incl.)</b></p> <p>ZVKM                                        2 M8 dust covers for unused sockets</p> <p>ZBR 5/10                                      attachable labels: 4 ports:                    5 pieces 6–8 ports:                10 pieces 10 ports:                    15 pieces</p>
--	--

Bestellbezeichnung Designation	Ausführung Version	
ASBSM 4/LED 3	4-fach / 4 ports	
ASBSM 6/LED 3	6-fach / 6 ports	
ASBSM 8/LED 3	8-fach / 8 ports	
ASBSM 10/LED 3	10-fach / 10 ports	